

METAPACE

Software Manual

Unified POS Utility

Ver. 1.00

Metapace T-3III

Copyright

© METAPACE Co., Ltd. All rights reserved.

This user manual and all property of the product are protected under copyright law. It is strictly prohibited to copy, store, and transmit the whole or any part of the manual and any property of the product without the prior written approval of METAPACE Co., Ltd.

The information contained herein is designed only for use with this METAPACE product. METAPACE is not responsible for any direct or indirect damages, arising from or related to use of this information.

- The METAPACE logo is the registered trademark of METAPACE Co., Ltd.
- All other brand or product names are trademarks of their respective companies or organizations.

METAPACE Co., Ltd. maintains ongoing efforts to enhance and upgrade the functions and quality of all our products.

In the following, product specifications and/or user manual content may be changed without prior notice.

Caution

Some semiconductor devices are easily damaged by static electricity. You should turn the printer "OFF", before you connect or remove the cables on the rear side, in order to guard the printer against the static electricity. If the printer is damaged by the static electricity, you should turn the printer "OFF".

Table of Contents

Copyright.....	2
1. Operating System (OS) Environment	5
2. Supported Printers	6
3. Usage Preparation.....	7
4. Unified POS Utility Usage.....	8
4-1 VMSM	8
4-1-1 Getting the Memory Switch Status of the Printer	8
4-1-2 Setting the memory switch status of the Printer	9
4-1-3 Paper Save Mode.....	10
4-1-4 Serial communication Setting.....	11
4-1-5 Bluetooth configuration	11
4-1-6 Emulation	13
4-2 NV Image Tool.....	14
4-2-1 NV Function Option.....	14
4-2-2 Image List Management	15
4-2-3 Correction image.....	15
4-2-4 Download the image	16
4-2-5 Print the image	17
4-3 Using the Command Test Editor	18

Introduction

The Unified POS Utility can be used for various purposes.

Details on the usage of each function are described as follows.

1) VMSM (Virtual Memory Switch Manager)

This function is used to set the virtual memory switch used for the thermal printer suitable for the user's environment.

2) NV Image Tool (Non-Volatile Image Tool)

This function helps you to download user-defined images to the flash memory in the printer and to recall and print those images with fast speed.

3) Command Test Editor

This function is used to test printing-related commands and create a brief label sample for test printing.

1. Operating System (OS) Environment

The following operating systems are supported for usage.

- Microsoft Windows 7 (32bit/64bit)
- Microsoft Windows 8 (32bit/64bit)
- Microsoft Windows 8.1 (32bit/64bit)
- Microsoft Windows 10 (32bit/64bit)
- Microsoft Windows 11 (64bit)
- Microsoft Windows Server 2008 (32bit/64bit)
- Microsoft Windows Server 2008R2 (64bit)
- Microsoft Windows Server 2012/2012R2 (64bit)
- Microsoft Windows Server 2016 (64bit)
- Microsoft Windows Server 2019 (64bit)

2. Supported Printers

“Unified POS Utility” is available for the following Metapace printers.

T-3III

3. Usage Preparation

1) Printer and PC Connection.

Connect the printer and PC via the interface cable.

(The interfaces available for usage are Serial, Parallel, USB, LAN, WLAN and Bluetooth.)

2) Unified POS Utility Program Execution.

The program Latest file versions can be downloaded from the Metapace website.

(<http://www.METAPACE.com>)

3) Select the interface type and communication conditions.

4) Click on the "Connect" Button. If the connection is successful, the inactive buttons become active with the message "The printer is connected".



Please select correct information of the interface type and communication conditions. If the connection fails, the following error message appears. "Cannot open port". In case of the PC was connected with many printers, please be careful of the port selecting.

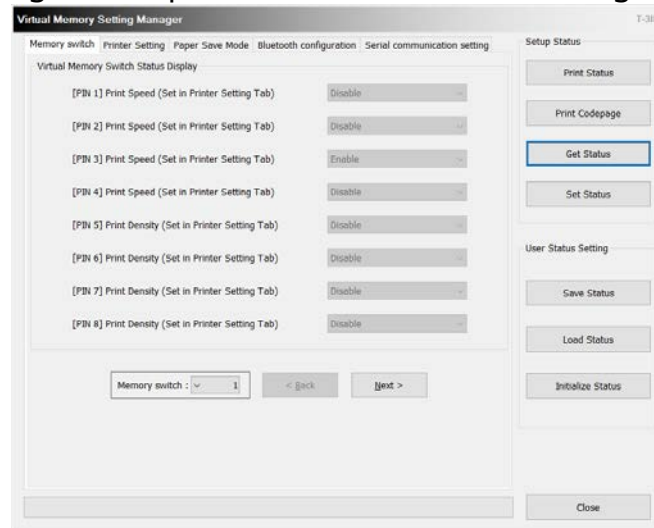
4. Unified POS Utility Usage

4-1 VMSM

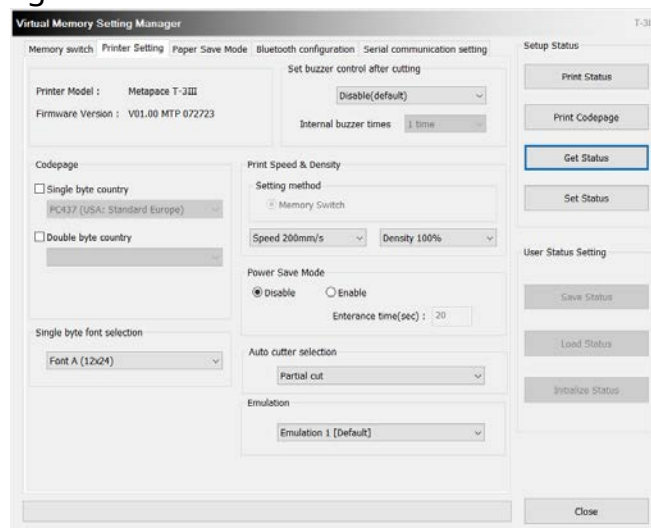
- This function is used to set the virtual memory switch used for the thermal printer suitable for the user's environment.
- If the Communication Setting is OK, click the "VMSM" button.

4-1-1 Getting the Memory Switch Status of the Printer

- 1) Click the "Get Status" button. It gets the status of the Printer Setting.
- 2) The "Memory switch" Tab in the Printer Status window displays the current virtual memory switch settings of the printer, and allows new settings to be defined.



- 3) The "Printer Setting" Tab displays printer information, and code page information, and allows new settings to be defined.



4-1-2 Setting the memory switch status of the Printer

After getting the memory switch status of the printer, the status of the printer can be modified.

Virtual Memory Switch Status Display	
[PIN 1] Print Speed (Set in Printer Setting Tab)	Disable
[PIN 2] Print Speed (Set in Printer Setting Tab)	Disable
[PIN 3] Print Speed (Set in Printer Setting Tab)	Enable
[PIN 4] Print Speed (Set in Printer Setting Tab)	Disable
[PIN 5] Print Density (Set in Printer Setting Tab)	Disable
[PIN 6] Print Density (Set in Printer Setting Tab)	Disable
[PIN 7] Print Density (Set in Printer Setting Tab)	Disable
[PIN 8] Print Density (Set in Printer Setting Tab)	Disable

Memory switch : 1 < Back Next >

Setup Status

- Print Status
- Print Codepage
- Get Status**
- Set Status

User Status Setting

- Save Status
- Load Status
- Initialize Status

Close

1) "Get Status"

Pressing this button displays the current memory switch settings read from the printer.

2) "Set Status"

Pressing this button allows the user to designate switch settings of the printer.

3) "Save Status"

Pressing this button saves the current memory switch settings to file.

4) "Load Status"

Pressing this button loads and displays the previously-saved memory switch settings file.

5) "Initialize Status"

Pressing this button resets the memory switch settings.

6) Code page

The user may select and set the code page.

Virtual Memory Setting Manager T-3III

Memory switch Printer Setting Paper Save Mode Bluetooth configuration Serial communication setting

Printer Model : Metapace T-3III
Firmware Version : V01.00 MTP 072723

Set buzzer control after cutting
Disable(default)
Internal buzzer times 1 time

Codepage
☐ Single byte country
PC437 (USA: Standard Europe)
☐ Double byte country

Print Speed & Density
Setting method
Memory Switch
Speed 200mm/s Density 100%

Power Save Mode
☒ Disable ☐ Enable
Entrance time(sec) : 20

Auto cutter selection
Partial cut

Emulation
Emulation 1 (Default)

Single byte font selection
Font A (12x24)

Setup Status
Print Status
Print Codepage
Get Status
Set Status

User Status Setting
Save Status
Load Status
Initialize Status
Close

4-1-3 Paper Save Mode

You can select the levels of "Paper Save" and the feature of "Cutting Position Correction" in the "Paper Save Mode" section (tab).

Virtual Memory Setting Manager T-3III

Memory switch Printer Setting Paper Save Mode Bluetooth configuration Serial communication setting

Paper Save Level
☒ Disable
☐ Level 1
☐ Level 2
☐ Level 3 (* ASCII code only)

Cutting Position Correction
☐ Enable
☒ Disable

Setup Status
Print Status
Print Codepage
Get Status
Set Status

User Status Setting
Save Status
Load Status
Initialize Status
Close

4-1-4 Serial communication Setting

Serial Communication and Special Function setting can be enabled in Serial Communication Setting Tab.

The screenshot shows the 'Virtual Memory Setting Manager' window with the 'Serial communication setting' tab selected. The 'Communication Setting' section includes a 'Setting method' with 'Memory Switch' selected and 'DIP Switch' unselected. Below this are dropdown menus for 'Baud Rate' (9600), 'Data Bits' (8), 'Parity' (EVEN), 'Flow Control' (DTR/DSR), and 'Reception Error' (Ignored). On the right, the 'Setup Status' section contains buttons for 'Print Status', 'Print Codepage', 'Get Status' (highlighted with a blue border), and 'Set Status'. The 'User Status Setting' section on the right has buttons for 'Save Status', 'Load Status', and 'Initialize Status'. A 'Close' button is at the bottom right.

4-1-5 Bluetooth configuration

Bluetooth setting can be changed by Bluetooth Configuration Tab.
In case of Serial (Bluetooth) communication, it is not able to check Bluetooth configuration.

The screenshot shows the 'Virtual Memory Setting Manager' window with the 'Bluetooth configuration' tab selected. The 'Bluetooth configuration' section includes 'Authentication & Encryption' with 'Disable' unselected and 'Enable' selected, and a 'Connection mode' dropdown set to 'Mode 2'. Below these are text fields for 'PIN Code' (0000) and 'Device name' (G30_090001). The 'Pairing mode & Role mode' section has a 'Pairing mode' dropdown set to 'PIN Code' and a 'Role mode' dropdown set to 'Classic'. To the right, the 'Auto Reconnection' section has 'Disable' unselected and 'Enable' selected. There are 'Get Status' and 'Set Status' buttons. On the right, the 'Setup Status' section contains buttons for 'Print Status', 'Print Codepage', 'Get Status', and 'Set Status'. The 'User Status Setting' section on the right has buttons for 'Save Status', 'Load Status', and 'Initialize Status'. A 'Close' button is at the bottom right.

1) Authentication & Encryption

Sets or cancels Authentication & Encryption mode when connecting via Bluetooth

* If Authentication & Encryption mode is disabled, connection to a device can be done without a PIN Code.

2) Connection Mode

Sets Mode1, Mode2, or Mode3 when connecting via Bluetooth.

- Mode1: connection possible only with the first device with which connection succeeds
- Mode2: connection with all Bluetooth enabled devices possible via use of a PIN Code
- Mode3: connection possible only with the first device with which connection succeeds and searching or use of connected device possible

3) PIN Code

Changes the PIN Code required for Bluetooth connections.

(Maximum 12 characters long)

4) Device Name

Changes the device name produced when establishing a Bluetooth connection.

(Maximum 12 characters long)

5) MFi Information

In case of iOS mode, MFi information will be displayed.

6) Auto Reconnection

Retry setting on Bluetooth can be enabled when Bluetooth connection is released.

7) Pairing mode

Changes the Bluetooth Pairing mode.

- PIN Code: When Bluetooth pairing, uses PIN Code exchange.
- SSP (Just works): When Bluetooth pairing, uses SSP (Secure Simple Pairing) mechanism.
- SSP (Numeric Comparison): When Bluetooth pairing, uses SSP (Secure Simple Pairing) which is added Numeric Comparison step.

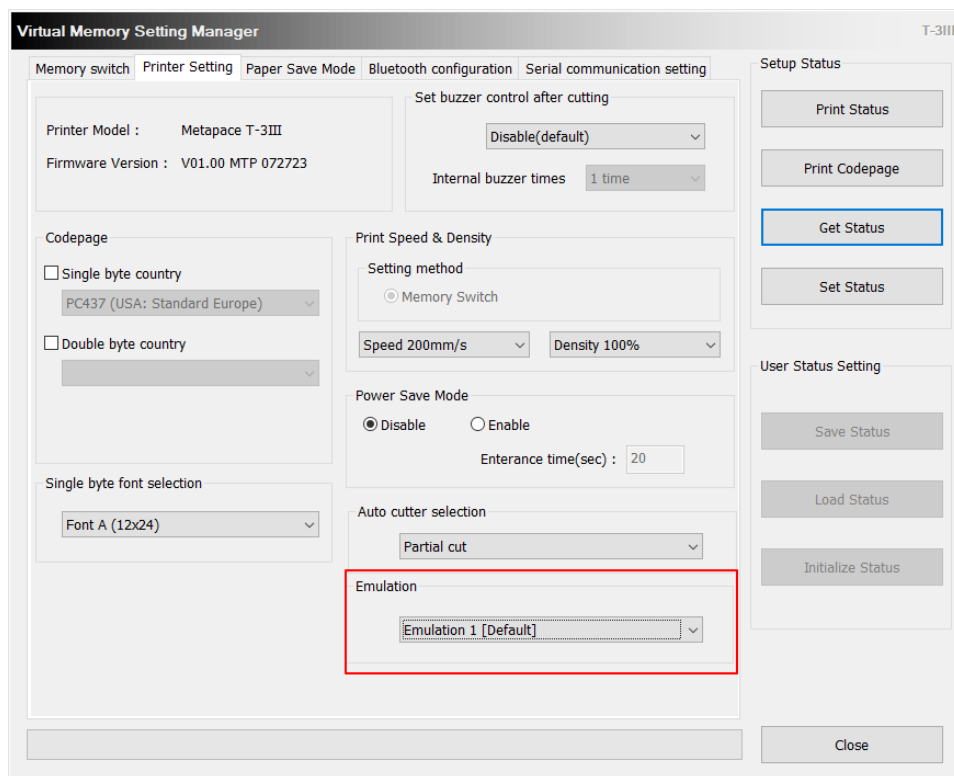
8) Role mode

Changes the Bluetooth Role mode.

- Classic
- BLE
- Classic & BRD

4-1-6 Emulation

It can be change printer emulation.

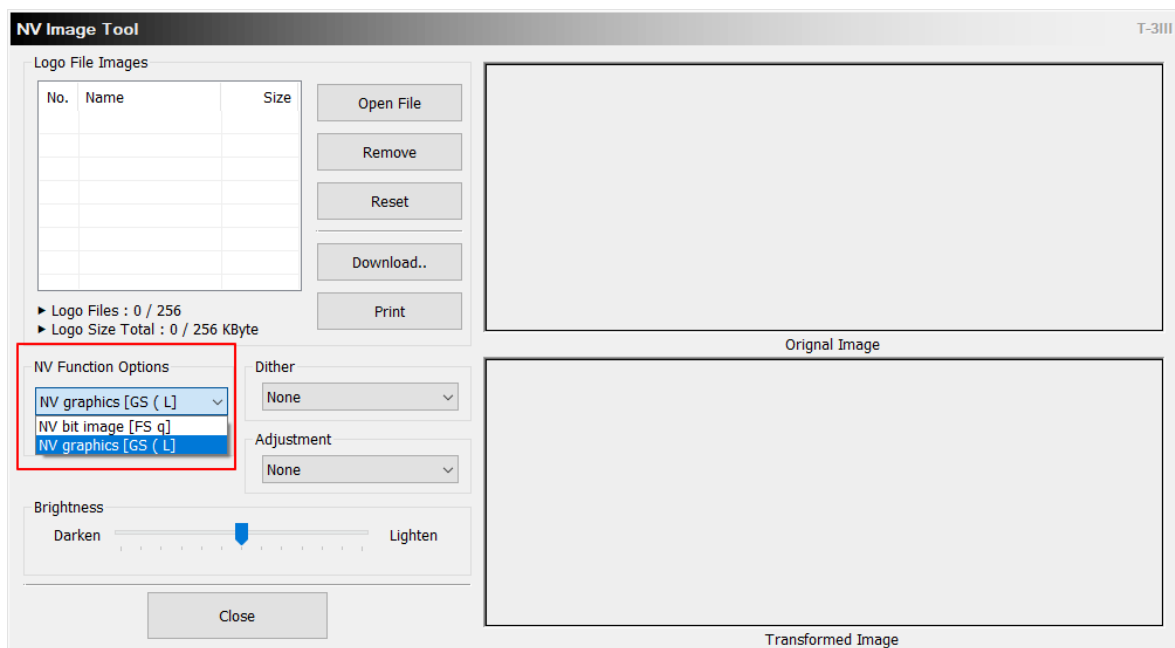


4-2 NV Image Tool

- This function helps you to download user-defined images to the flash memory in the printer and to recall and print those images with fast speed.
- If the Communication Setting is OK, click the “NV Image Tool” button.

4-2-1 NV Function Option

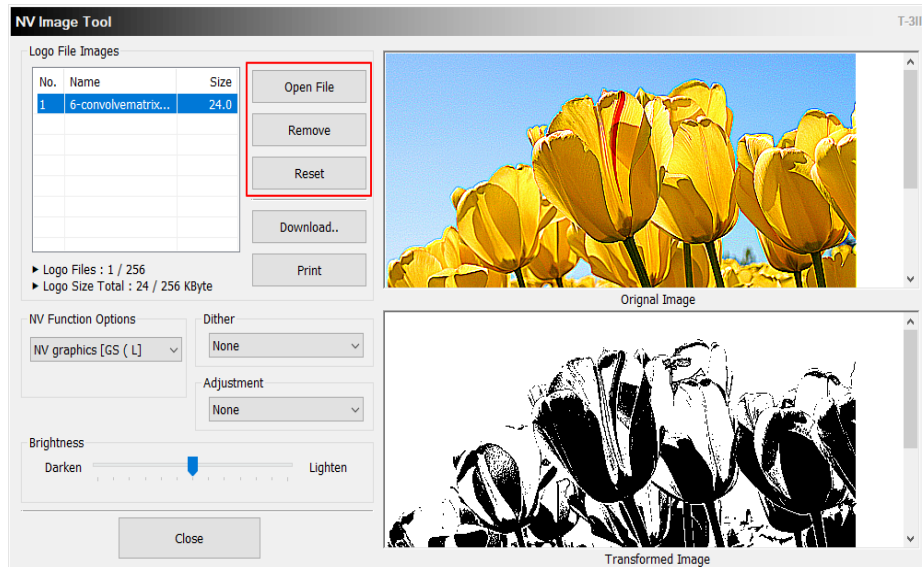
If the Printer is supported two-color mode, mono (NV bit image) or two-color (NV graphics) mode can be selected.



Please refer to below commands for each mode.
The command for NV bit image: FS p
The command for NV graphics: GS (L

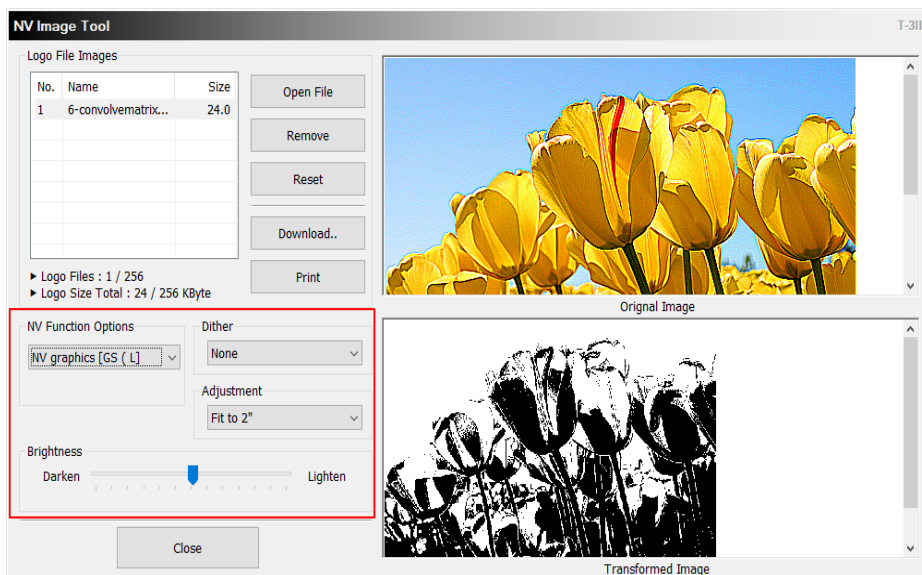
4-2-2 Image List Management

The images can be opened, added, deleted in the Image list box using three buttons in Bitmap selection. Only bmp type of image is available to download.



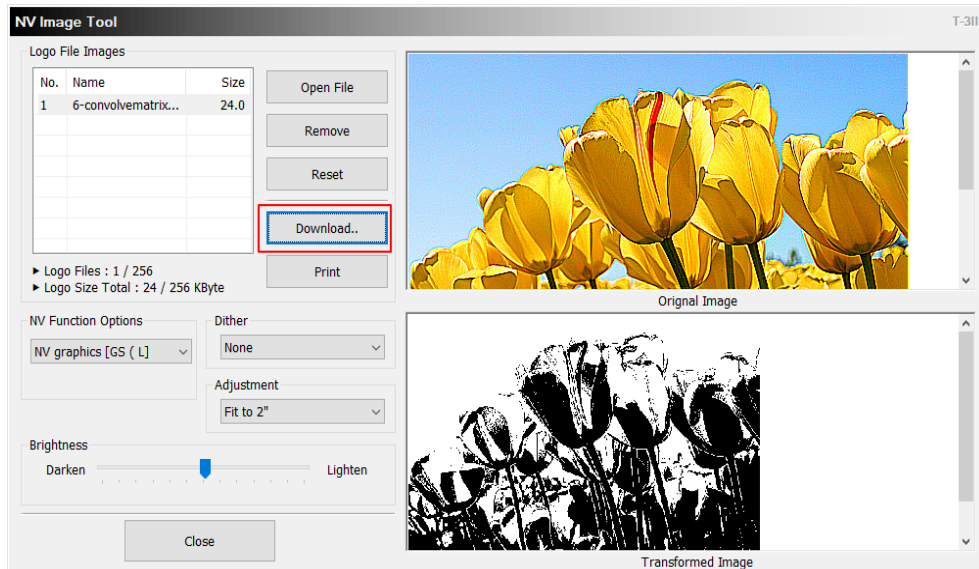
4-2-3 Correction image

You can get the correction image by selecting a 'Dither', 'Brightness' and 'Adjustment' option.

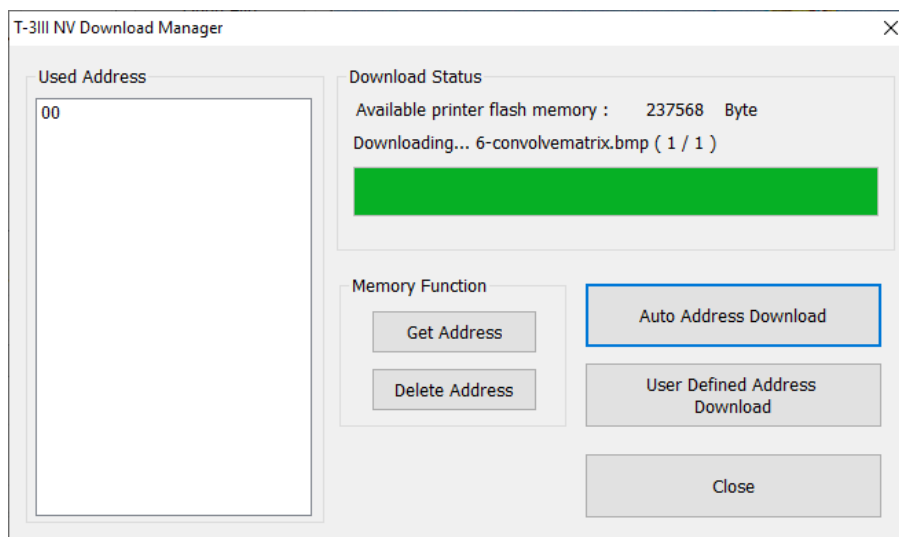


4-2-4 Download the image

- 1) When the "Download" button is clicked, pop-up window and the steps are different based on printer model.

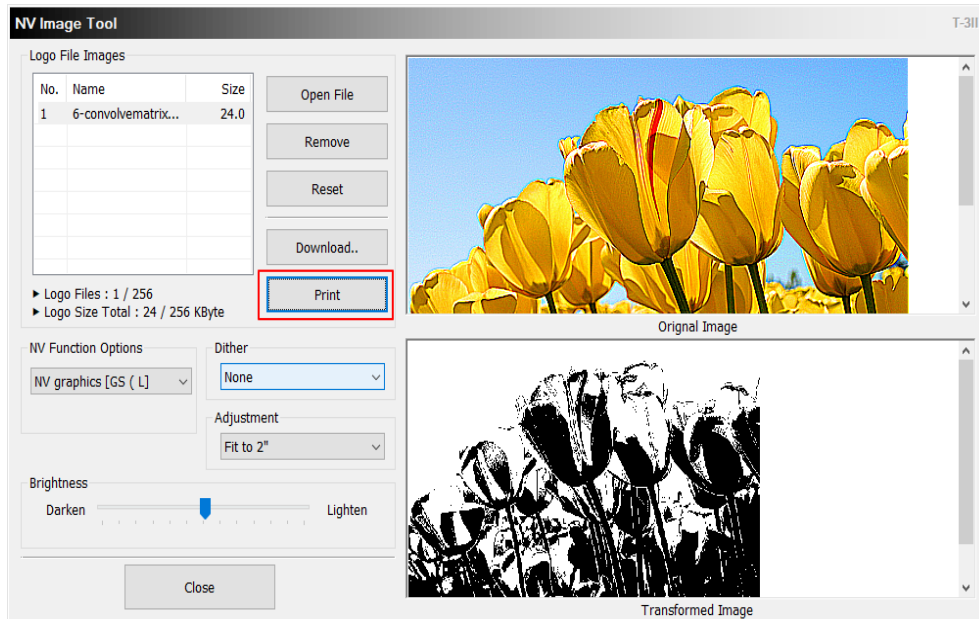


- 2) After all images stored on the corresponding printer are deleted, the image matching the selected resolution level is downloaded. The image is assigned a number according to the image list displayed on the screen.

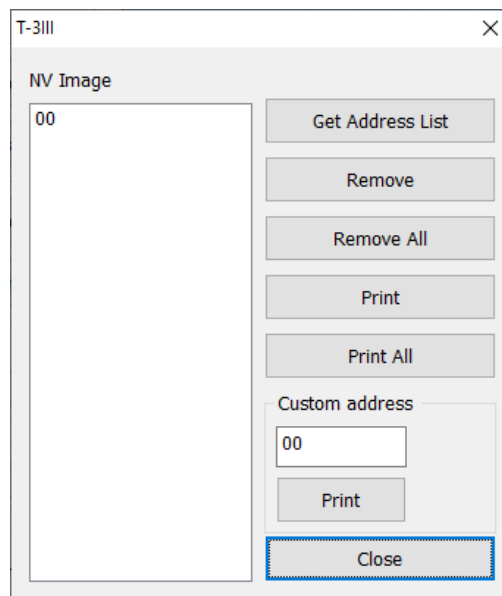


4-2-5 Print the image

- 1) The "Print" button in the main screen can be used on each printer model to print and test a stored image.



- 2) After selecting the image to print following the recall of the addresses of all currently stored images, press the "Print" button to print.



4-3 Using the Command Test Editor

- 1) If the Communication Setting is OK, click the "Command Test Editor" button.
- 2) If the "Command Test Editor" button is pressed, the following dialog box will appear. Using this Dialog, the user can write and edit the command and send to the printer. Each button of "Printing Option" and "Etc" group can insert commands to edit box. Also "Write Command" button can transfer these commands to the printer. To verify the result of sending the command can use the "Print Test String" button.

Command Test Editor T-3111

Command (Hex Value, Ex: 1d 61 ff 0a)

Write to the Printer

Write Command

Test Printing

Print Test String

Self Test

Clear command

* After Editing the Command,
Click the Command Write Button to send the Printer.

Printing Option

Font

Font A Font B Line Spacing Select Codepage ☐ Bold ☐ Underline

Alignment

Left Alignment Center Alignment Right Alignment

Cut and Feeding

Paper Cut Feed

Printer status

Status check

Cash Drawer

Open Drawer1 50ms(2pin) Open Drawer2 50ms(5pin)

File

Save Load

Close



It is possible to be different the supported commands by the models. You can download the command manual from the Metapace website. (<http://www.METAPACE.com/>)